



**SOUTHERN TIER EXPRESS INC**

DOT#:276684



The SMS provides an assessment of a motor carrier's on-road performance and investigation results within the Behavior Analysis and Safety Improvement Categories (BASICS). Assessments cover 24 months of activity and results are updated monthly. For current Motor Carrier Safety Ratings visit SAFER and for current operating authority and insurance information visit Licensing and Insurance (L&I) system.

**Select a BASIC below to view details**

	PERFORMANCE					
BASICS Overview (Based on a 24-month record ending May 30, 2014)	On-Road	Investigation	=	BASICs Status		
<b>Unsafe Driving</b>	<b>14.9%</b>		=			
<b>Hours-of-Service (HOS) Compliance</b>	<b>31.1%</b>		=			
<b>Driver Fitness</b>	<b>&lt; 5 insp. w/ viol.</b>		=			
<b>Controlled Substances and Alcohol</b>	<b>0%</b>		=			
<b>Vehicle Maintenance</b>	<b>15.1%</b>		=			
<b>Hazardous Materials (HM) Compliance</b>	<b>Not Public</b>	<b>Not Public</b>	=	<b>Not Public</b>		
<b>Crash Indicator</b>	<b>Not Public</b>	<b>Not Applicable</b>	=	<b>Not Public</b>		

**ICON LEGEND**

Serious violation cited within last 12 months from an investigation.

Denotes this carrier exceeds the FMCSA intervention threshold relative to its safety event grouping based upon roadside data and/or has been cited with one or more serious violations within the past 12 months during an investigation. Therefore, this carrier may be prioritized for an intervention action and roadside inspection.

SUMMARY OF ACTIVITIES		
	Number	OOS Rate
<b>Total Inspections:</b>	323	
Driver Inspections:	315	1 %
Vehicle Inspections:	277	6 %
Placardable HM Inspections:	0	0 %
% Placardable HM Inspections:	0 %	
<b>Total Crashes*:</b>	4	
Fatal Crashes:	0	
Injury Crashes:	1	
Towaway Crashes:	3	

\*Crashes listed represent a motor carrier's involvement in reportable crashes, without any determination as to responsibility. [Continue for details.](#)

RECENT INVESTIGATIONS		
	Intervention Type	Date
	Compliance Review	3/16/1992
	Safety Review	10/16/1987

**Carrier Registration Information as of May 30, 2014**

<b>Legal Name:</b>	Southern Tier Express Inc	<b>Vehicle Miles Traveled:</b>	2,481,467
<b>DBA Name:</b>		<b>VMT Year:</b>	2012
<b>DOT#:</b>	276684	<b>Power Units:</b>	51
<b>MC or MX#:</b>	MC-198252	<b>DUNS Number:</b>	18-175-7071
<b>Address:</b>	558 Lane School Rd Andover, NY 14806-9509	<b>Drivers:</b>	50
<b>Telephone:</b>	(607) 478-8503	<b>Carrier Operation:</b>	Interstate
<b>Fax:</b>	(607) 478-5018	<b>Passenger:</b>	No
<b>Email:</b>		<b>Subject to Placardable HM Threshold:</b>	No
		<b>HHG:</b>	No
		<b>New Entrant</b>	No

**Operation Classification:**

<input checked="" type="checkbox"/> AUTHORIZED FOR HIRE	<input type="checkbox"/> EXEMPT FOR HIRE	<input type="checkbox"/> PRIVATE PROPERTY
<input type="checkbox"/> PRIVATE PASSENGER, BUSINESS	<input type="checkbox"/> PRIVATE PASSENGER, NON-BUSINESS	<input type="checkbox"/> MIGRANT
<input type="checkbox"/> U. S. MAIL	<input type="checkbox"/> FEDERAL GOVERNMENT	<input type="checkbox"/> STATE GOVERNMENT
<input type="checkbox"/> LOCAL GOVERNMENT	<input type="checkbox"/> INDIAN TRIBE	<input type="checkbox"/> OTHER

**Cargo Carried:**

GENERAL FREIGHT	HOUSEHOLD GOODS	METAL; SHEETS, COILS, ROLLS
MOTOR VEHICLES	DRIVE AWAY/TOWAWAY	<input checked="" type="checkbox"/> LOGS, POLES, BEAMS, LUMBER
BUILDING MATERIALS	MOBILE HOMES	<input checked="" type="checkbox"/> MACHINERY, LARGE OBJECTS
FRESH PRODUCE	LIQUIDS/GASES	INTERMODAL CONTAINERS
PASSENGERS	OIL FIELD EQUIPMENT	LIVESTOCK
GRAIN, FEED, HAY	COAL, COKE	MEAT
GARBAGE, REFUSE, TRASH	U.S. MAIL	CHEMICALS
COMMODITIES DRY BULK	REFRIGERATED FOOD	BEVERAGES

PAPER PRODUCTS  
CONSTRUCTION

UTILITY  
WATER WELL

FARM SUPPLIES  
OTHER

Vehicle Type Breakdown			
Vehicle Type	Owned	Term Leased	Trip Leased
Straight Trucks	1		
Truck Tractors	50		
Trailers*	160		
Hazmat Cargo Tank Trailers*			
Hazmat Cargo Tank Trucks			
Motor Coach			
School Bus 1-8 Passengers			
School Bus 9-15 Passengers			
School Bus 16+ Passengers			
Mini-Bus 16+ Passengers			
Van 1-8 Passengers			
Van 9-15 Passengers			
Limousine 1-8 Passengers			
Limousine 9-15 Passengers			
Limousine 16+ Passengers			

\* Indicates power units not used by the Carrier Safety Measurement System when calculating total power units.



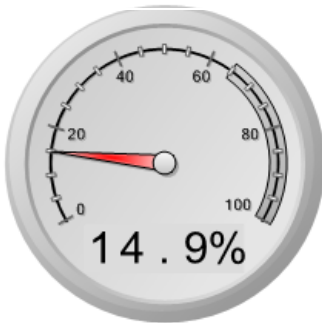
### Unsafe Driving

Operation of CMVs by drivers in a dangerous or careless manner. (FMCSR Parts 392 and 397)

#### BASIC Overall Status

Does not exceed intervention threshold based upon On-road Performance and Investigation Results.  
(Based on a 24-month record ending May 30, 2014)

#### On-road Performance Overview



MEASURE: 1.65  
PERCENTILE: 14.9%  
(Threshold: 65%)

Safety Event Grouping: 9-21  
Segment: Combo

Average Power Units: 53.3  
Vehicle Miles Traveled (VMT): 2,481,467  
VMT Year: 2012 VMT Source: Registration (MCS-150)  
Average Power Units (APU) x Utilization Factor (UF): 53.3  
Total Inspections with Unsafe Driving Violations: 10  
Total Unsafe Driving Violations: 10

The Unsafe Driving measure/percentile is based on Roadside Inspection reports. Some Unsafe Driving violations are reported when a Roadside Inspection was performed following a traffic stop for the Unsafe Driving violation. These reported violations do not always result in the issuance of a citation to the driver.

#### UNSAFE DRIVING

Violation	Description	# Total Violations	# OOS Violations	Violation Weight
392.16	Failing to use seat belt while operating CMV	1	0	7
392.2C	Failure to obey traffic control device	2	0	5
392.2LC	Improper lane change	1	0	5
392.2LV	Lane Restriction violation	1	0	3
392.2P	Improper passing	1	0	5
392.2-SLLS2	State/Local Laws - Speeding 6-10 miles per hour over the speed limit	3	0	4

392.2-SLLSWZ	State/Local Laws - Speeding work/construction zone	1	0	10
--------------	--	---	---	----


### INSPECTIONS WITH VIOLATIONS HISTORY

Report			Vehicle			Measure			
Inspection Date	#	ST	Plate #	Lic ST	Type	Severity Weight (A)	Time Weight (B)	Time Severity Weight (AxB)	
1	3/31/2014	OH1100005290	OH	10701PC	NY	Truck Tractor	10	3	30
Violation: 392.2-SLLSWZ State/Local Laws - Speeding work/construction zone (Non-OOS)						10			
2	1/20/2014	NM3663100324	NM	10724PC	NY	Truck Tractor	4	3	12
Violation: 392.2-SLLS2 State/Local Laws - Speeding 6-10 miles per hour over the speed limit (Non-OOS)						4			
3	1/4/2014	OK00F1006662	OK	10717PC	NY	Truck Tractor	4	3	12
Violation: 392.2-SLLS2 State/Local Laws - Speeding 6-10 miles per hour over the speed limit (Non-OOS)						4			
4	5/28/2013	NYSPE0190887	NY	21933PC	NY	Truck Tractor	7	1	7
Violation: 392.16 Failing to use seat belt while operating CMV (Non-OOS)						7			
5	11/12/2012	OH0111005014	OH	23629PC	NY	Truck Tractor	5	1	5
Violation: 392.2C Failure to obey traffic control device (Non-OOS)						5			
6	10/30/2012	KY0FFV001541	KY	10738PC	NY	Truck Tractor	3	1	3
Violation: 392.2LV Lane Restriction violation (Non-OOS)						3			
7	10/24/2012	VT5600004100	VT	10718PC	NY	Truck Tractor	5	1	5
Violation: 392.2LC Improper lane change (Non-OOS)						5			
8	9/11/2012	PAS339000973	PA	30536JR	NY	Straight Truck	5	1	5
Violation: 392.2C Failure to obey traffic control device (Non-OOS)						5			
9	6/30/2012	ARA221003718	AR	10700PC	NY	Truck Tractor	4	1	4
Violation: 392.2-SLLS2 State/Local Laws - Speeding 6-10 miles per hour over the speed limit (Non-OOS)						4			
10	5/30/2012	PAS157003056	PA	21780PC	NY	Truck Tractor	5	1	5
Violation: 392.2P Improper passing (Non-OOS)						5			

#### Investigation Results Overview



**No serious violation(s) discovered**

Certain violations found during an investigation can result in a  for a BASIC. The status remains for 12 months following the investigation.



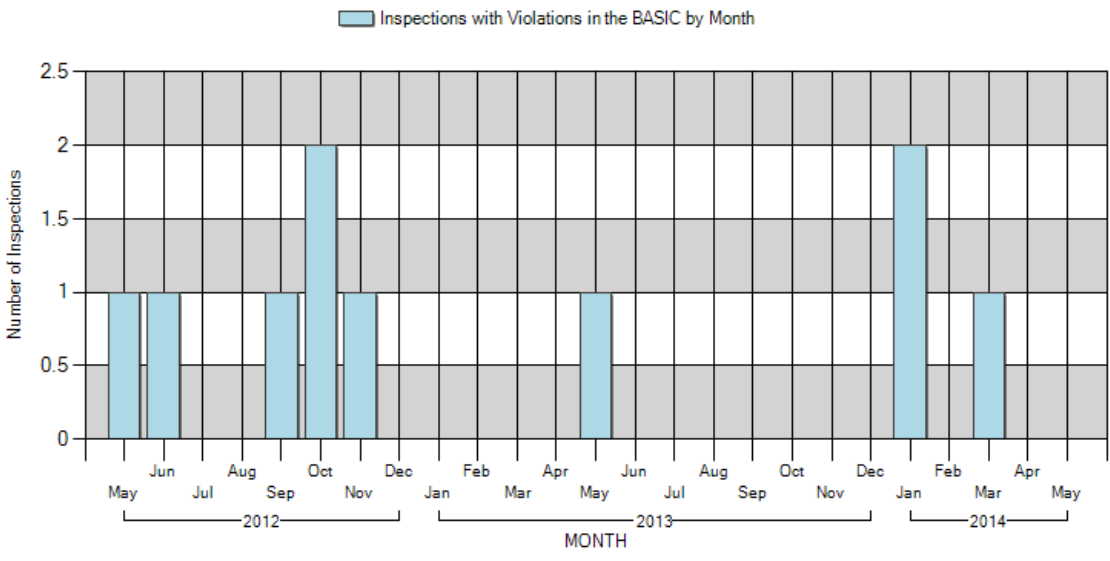
### SERIOUS VIOLATIONS FROM INVESTIGATIONS

**There are no Serious Violations to display**

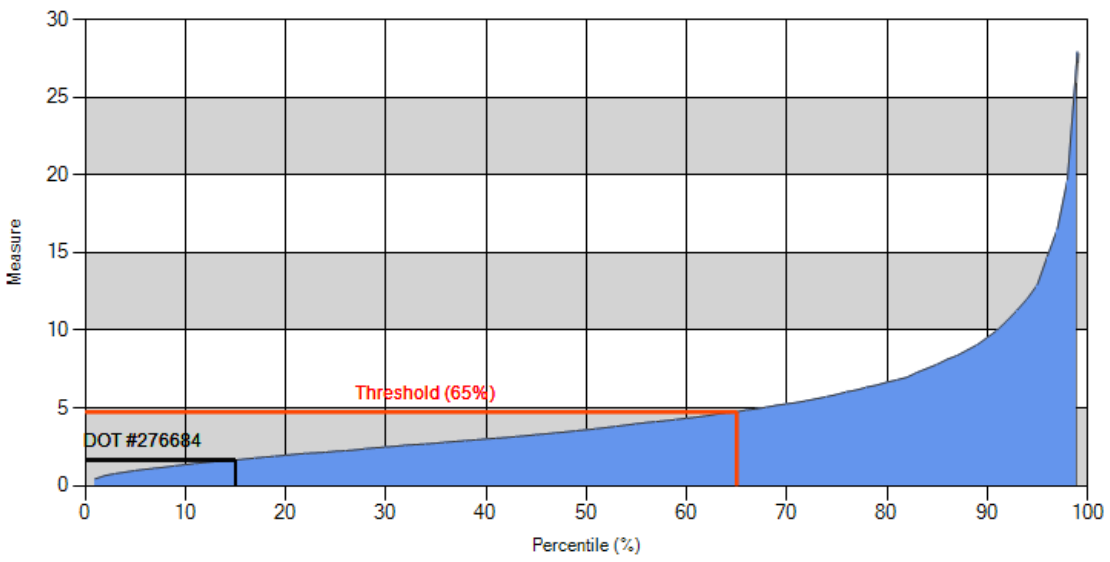
Use this page to view graphs of various aspects of your safety performance.

Trends View

### Inspections with Violations



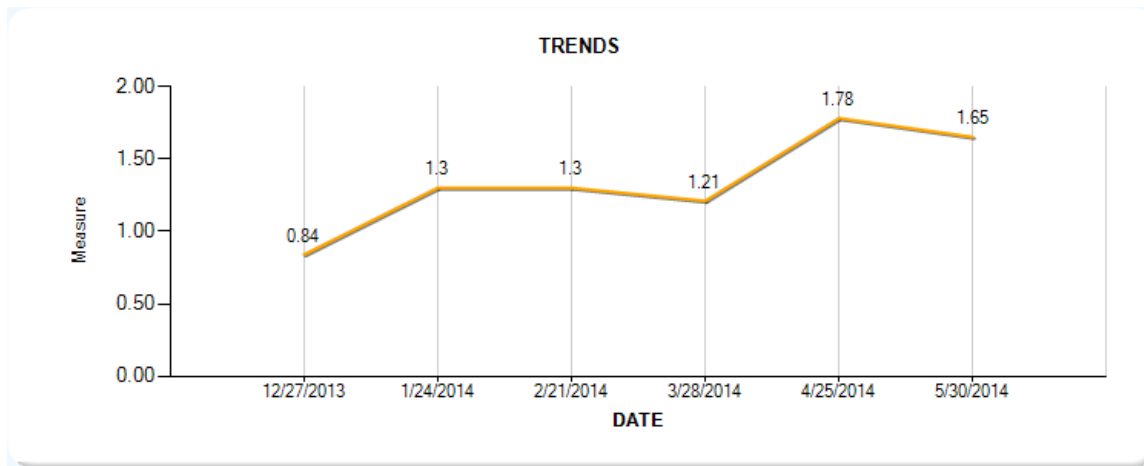
### Safety Event Group Measure vs Percentile









Measure =  $\frac{\text{Sum of Time Severity Weight (AxB)}}{\text{APU * UF}} = \frac{88}{53.3} = 1.65 \Rightarrow 14.9\%$

### Trends of Unsafe Driving Measure based on SMS 3.0

The trends area shows a Motor Carrier's safety performance over time using a consistent methodology, SMS 3.0



Trends Detail	12/27/2013	01/24/2014	02/21/2014	03/28/2014	04/25/2014	05/30/2014
Percentage:	4.7%	9.6%	9.7%	8.6%	17.3%	14.9%
Measure:	0.84	1.30	1.30	1.21	1.78	1.65
Safety Event Grouping:	●○○○○ 3-8	●○○○○ 9-21	●○○○○ 9-21	●○○○○ 9-21	●○○○○ 9-21	●○○○○ 9-21
Segment:	 Combo	 Combo	 Combo	 Combo	 Combo	 Combo
Average Power Units:	53	53	53	53	53	53
Vehicle Miles Traveled (VMT):	2,481,467	2,481,467	2,481,467	2,481,467	2,481,467	2,481,467
VMT Year:	2012	2012	2012	2012	2012	2012
VMT Source:	MCS-150	MCS-150	MCS-150	MCS-150	MCS-150	MCS-150
Average Power Units(APU) x Utilization Factor (UF):	53.0	53.0	53.0	53.3	53.3	53.3
Total Inspections with Unsafe Driving Violations:	8	10	10	9	10	10
Total Unsafe Driving Violations:	8	10	10	9	10	10



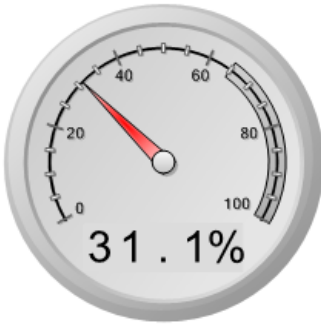
## Hours-of-Service (HOS) Compliance

Operation of CMVs by drivers who are ill, fatigued, or in non-compliance with the Hours-of-Service (HOS) regulations. (FMCSR Parts [392](#) and [395](#))

### BASIC Overall Status

Does not exceed intervention threshold based upon On-road Performance and Investigation Results.

*(Based on a 24-month record ending May 30, 2014)*



MEASURE: 0.36  
 PERCENTILE: 31.1%  
 (Threshold: 65%)



Relevant Inspections: 315  
 Total Inspections with HOS Compliance Violations: 13  
 Total HOS Compliance Violations: 20

### HOS COMPLIANCE

Violation	Description	# Total Violations	# OOS Violations	Violation Weight
395.3(a)(1)	Requiring or permitting driver to drive more than 11 hours	1	0	7
395.3(a)(2)	Requiring or permitting driver to drive after 14 hours on duty	2	0	7
395.3(a)(3)(ii)	Driving beyond 8 hour limit since the end of the last off duty or sleeper period of at least 30 minutes	4	0	7
395.3A3-PROP	Driving beyond 11 hour driving limit in a 14 hour period. (Property Carrying Vehicle)	1	1	7
395.3B2	Driving after 70 hours on duty in a 8 day period. (Property carrying vehicle)	2	2	7
395.8	Driver's record of duty status (general/form and manner)	5	0	1
395.8(e)	False report of driver's record of duty status	1	0	7
395.8(f)(1)	Driver's record of duty status not current	4	0	5


### INSPECTIONS WITH VIOLATIONS HISTORY

Report			Vehicle			Measure			
Inspection Date	#	ST	Plate #	Lic ST	Type	Severity Weight (A)	Time Weight (B)	Time Severity Weight (AxB)	
1	10/21/2013	NYSPG0181128	NY	10715PC	NY	Truck Tractor	7	2	14
Violation: 395.3(a)(3)(ii) Driving beyond 8 hour limit since the end of the last off duty or sleeper period of at least 30 minutes (Non-OOS)						7			
2	10/13/2013	LALAIW002442	LA	10707PC	NY	Truck Tractor	1	2	2
Violation: 395.8 Driver's record of duty status (general/form and manner) (Non-OOS)						1			
3	9/11/2013	MN00UT000399	MN	10717PC	NY	Truck Tractor	9	2	18
Violation: 395.3A3-PROP Driving beyond 11 hour driving limit in a 14 hour period. (Property Carrying Vehicle) (OOS)						9	=7 (viol weight) + 2 (OOS)		
4	9/10/2013	IN8283004213	IN	10700PC	NY	Truck Tractor	16	2	32
Violation: 395.3(a)(3)(ii) Driving beyond 8 hour limit since the end of the last off duty or sleeper period of at least 30 minutes (Non-OOS)						7			
Violation: 395.3B2 Driving after 70 hours on duty in a 8 day period. (Property carrying vehicle) (OOS)						9	=7 (viol weight) + 2 (OOS)		
5	9/9/2013	MN00VR000687	MN	10735PC	NY	Straight Truck	7	2	14
Violation: 395.3(a)(3)(ii) Driving beyond 8 hour limit since the end of the last off duty or sleeper period of at least 30 minutes (Non-OOS)						7			
6	7/26/2013	NYSPA0173073	NY	10715PC	NY	Truck Tractor	13	2	26
Violation: 395.3(a)(3)(ii) Driving beyond 8 hour limit since the end of the last off duty or sleeper period of at least 30 minutes (Non-OOS)						7			
Violation: 395.8 Driver's record of duty status (general/form and manner) (Non-OOS)						1			
Violation: 395.8(f)(1) Driver's record of duty status not current (Non-OOS)						5			
7	6/25/2013	TX134W0EGJ08	TX	10700PC	NY	Truck Tractor	5	2	10
Violation: 395.8(f)(1) Driver's record of duty status not current (Non-OOS)						5			
8	5/17/2013	NYSPA0103204	NY	TEMPORARY	NY	Truck Tractor	7	1	7
Violation: 395.3(a)(2) Requiring or permitting driver to drive after 14 hours on duty (Non-OOS)						7			
9	5/3/2013	PAC050006505	PA	10735PC	NY	Truck Tractor	1	1	1
Violation: 395.8 Driver's record of duty status (general/form and manner) (Non-OOS)						1			
10	11/28/2012	NYSPA0193029	NY	99979JT	NY	Straight Truck	20	1	20
Violation: 395.3(a)(2) Requiring or permitting driver to drive after 14 hours on duty (Non-OOS)						7			
Violation: 395.3(a)(1) Requiring or permitting driver to drive more than 11 hours (Non-OOS)						7			
Violation: 395.8 Driver's record of duty status (general/form and manner) (Non-OOS)						1			
Violation: 395.8(f)(1) Driver's record of duty status not current (Non-OOS)						5			
11	11/12/2012	OH0111005014	OH	23629PC	NY	Truck Tractor	9	1	9
Violation: 395.3B2 Driving after 70 hours on duty in a 8 day period. (Property carrying vehicle) (OOS)						9	=7 (viol weight) + 2 (OOS)		
12	6/11/2012	MD00JK001101	MD	10727PC	NY	Truck Tractor	5	1	5
Violation: 395.8(f)(1) Driver's record of duty status not current (Non-OOS)						5			
13	6/6/2012	UT12DM000014	UT	10707PC	NY	Truck Tractor	8	1	8
Violation: 395.8 Driver's record of duty status (general/form and manner) (Non-OOS)						1			
Violation: 395.8(e) False report of driver's record of duty status (Non-OOS)						7			

Investigation Results Overview



No serious violation(s) discovered

Certain violations found during an investigation can result in a  for a BASIC. The status remains for 12 months following the investigation.

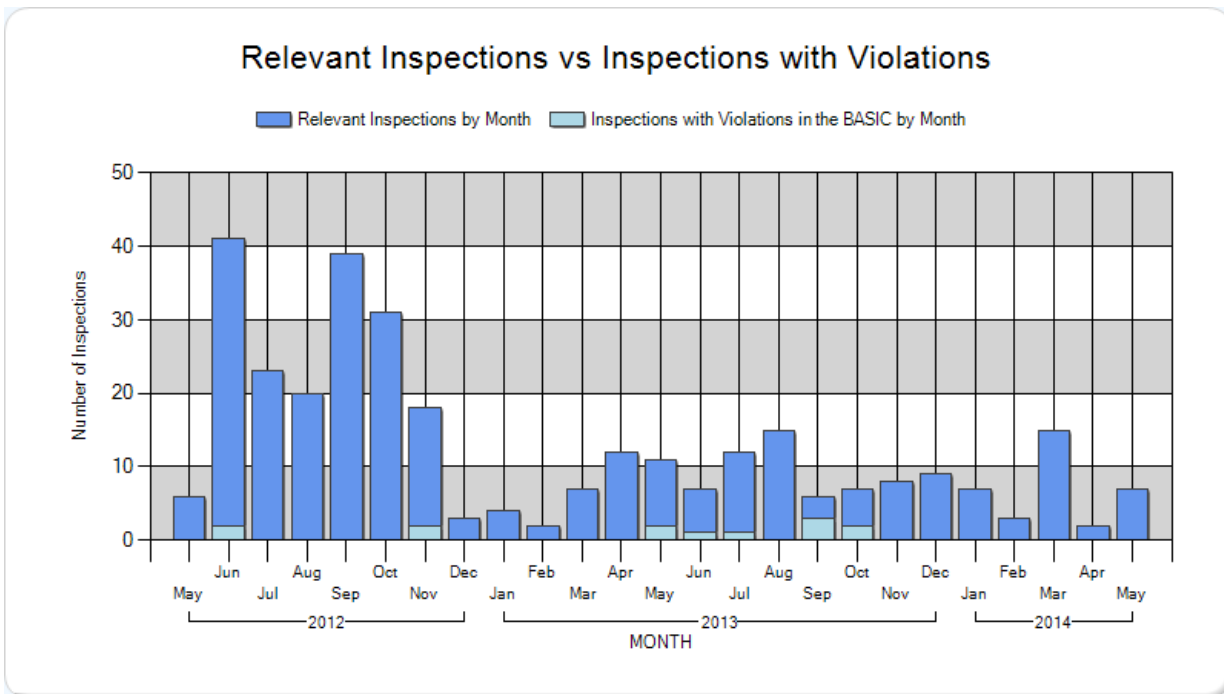


SERIOUS VIOLATIONS FROM INVESTIGATIONS

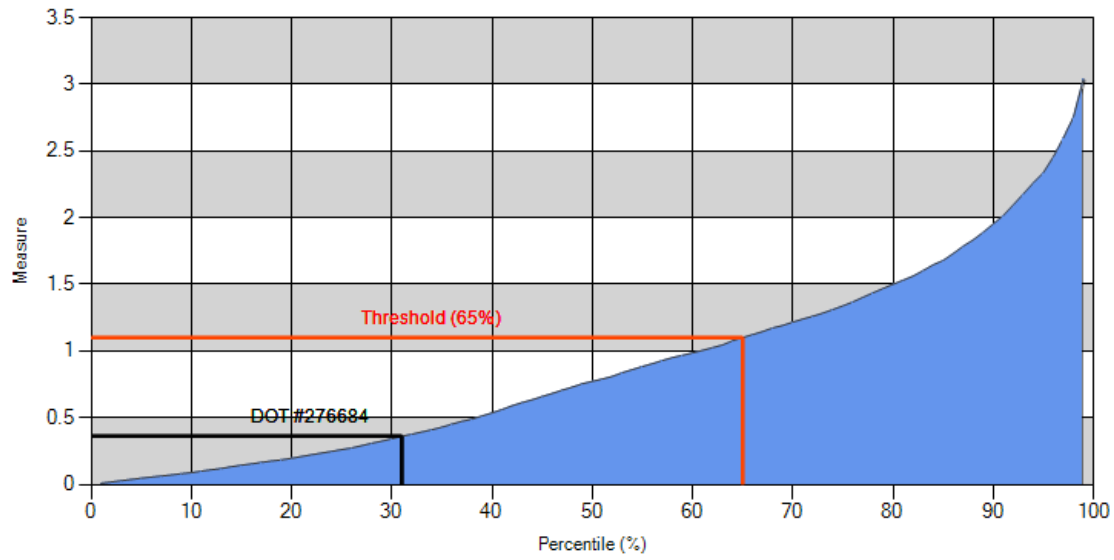
There are no Serious Violations to display

Use this page to view graphs of various aspects of your safety performance.

Trends View



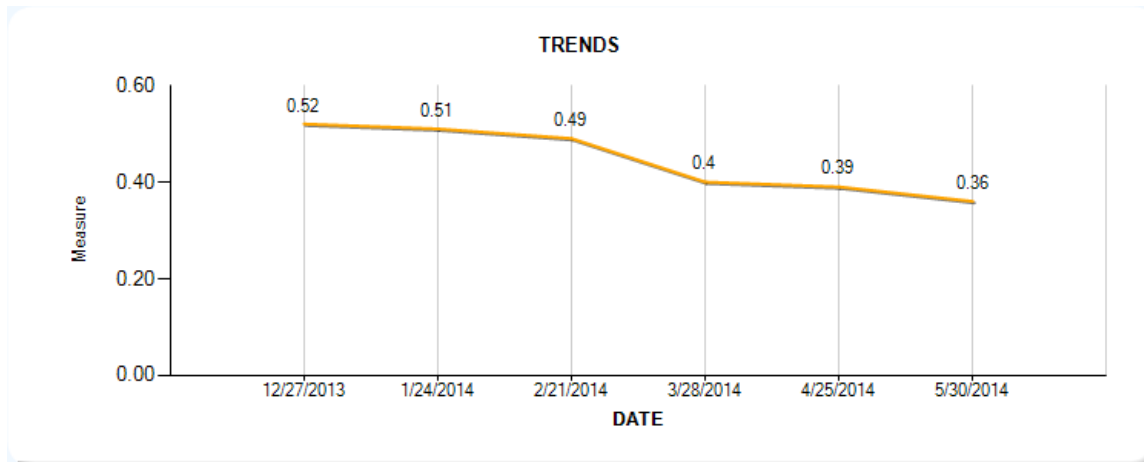
### Safety Event Group Measure vs Percentile



Measure =  $\frac{\text{Sum of Time Severity Weight (AxB)}}{\text{Sum of Time Weight (B)}} = \frac{166}{458} = 0.36 \Rightarrow 31.1\%$

### Trends of Hours-of-Service (HOS) Compliance Measure based on SMS 3.0

The trends area shows a Motor Carrier's safety performance over time using a consistent methodology, SMS 3.0





Percentage:	39.9%	38.9%	38%	33.8%	32.9%	31.1%
Measure:	0.52	0.51	0.49	0.40	0.39	0.36
Safety Event Grouping:	101-500	101-500	101-500	101-500	101-500	101-500
Relevant Inspections:	318	321	321	331	321	315
Total Inspections with HOS Compliance Violations:	17	17	17	17	14	13
Total HOS Compliance Violations:	24	24	24	24	21	20

## Driver Fitness

Operation of CMVs by drivers who are unfit to operate a CMV due to lack of training, experience, or medical qualifications. (FMCSR Parts [383](#) and [391](#))

**BASIC Overall Status**  
 Does not exceed intervention threshold based upon On-road Performance and Investigation Results.  
*(Based on a 24-month record ending May 30, 2014)*

### On-road Performance Overview



**MEASURE: 0.04**  
**PERCENTILE: < 5 insp. w/ viol.**  
 (Threshold: 80%)

Safety Event Grouping

Relevant Inspections: **315**  
 Total Inspections with Driver Fitness Violations: **1**  
 Total Driver Fitness Violations: **2**

## DRIVER FITNESS

Violation	Description	# Total Violations	# OOS Violations	Violation Weight
391.11(b)(1)	Interstate driver under 21 years of age	1	1	4
391.41A-F	Operating a property-carrying vehicle without possessing a valid medical certificate.	1	0	1

## INSPECTIONS WITH VIOLATIONS HISTORY

Report			Vehicle				Measure		
	Inspection Date	#	ST	Plate #	Lic ST	Type	Severity Weight (A)	Time Weight (B)	Time Severity Weight (AxB)
1	3/12/2014	NYMC45000321	NY	99979JT	NY	Straight Truck	7	3	21
Violation: 391.41A-F Operating a property-carrying vehicle without possessing a valid medical certificate. (Non-OOS)							1		
Violation: 391.11(b)(1) Interstate driver under 21 years of age (OOS)							6	=4 (viol weight) + 2 (OOS)	

### Investigation Results Overview

**No serious violation(s) discovered**

Certain violations found during an investigation can result in a for a BASIC. The status remains for 12 months following the investigation.





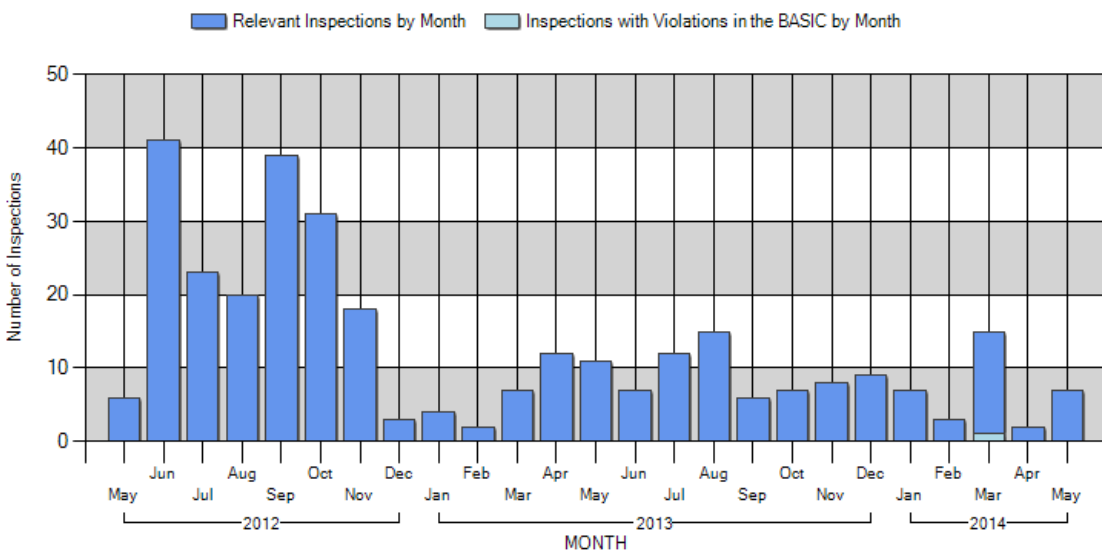
## SERIOUS VIOLATIONS FROM INVESTIGATIONS

There are no Serious Violations to display

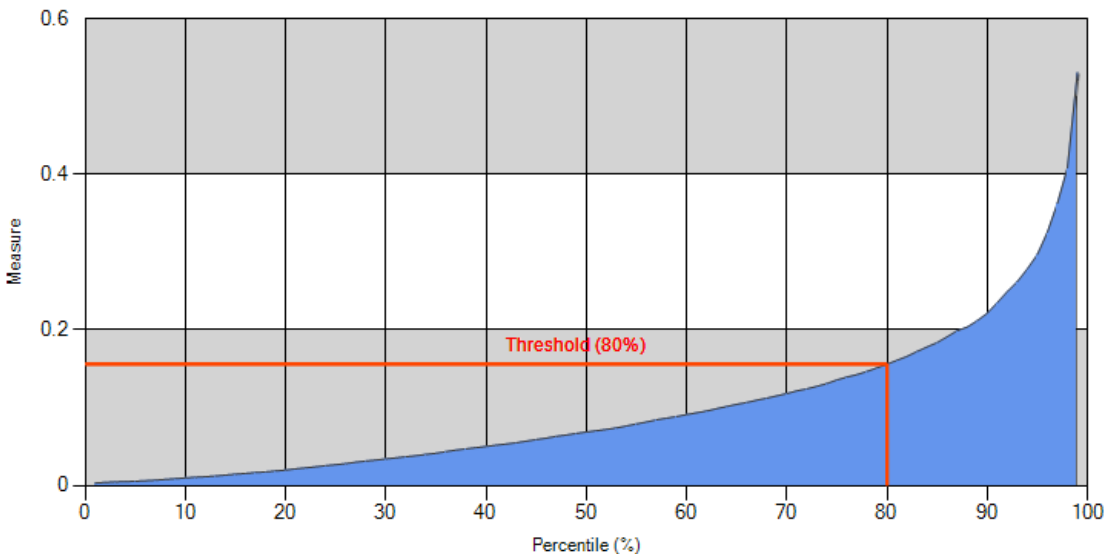
Use this page to view graphs of various aspects of your safety performance.

Trends View

### Relevant Inspections vs Inspections with Violations



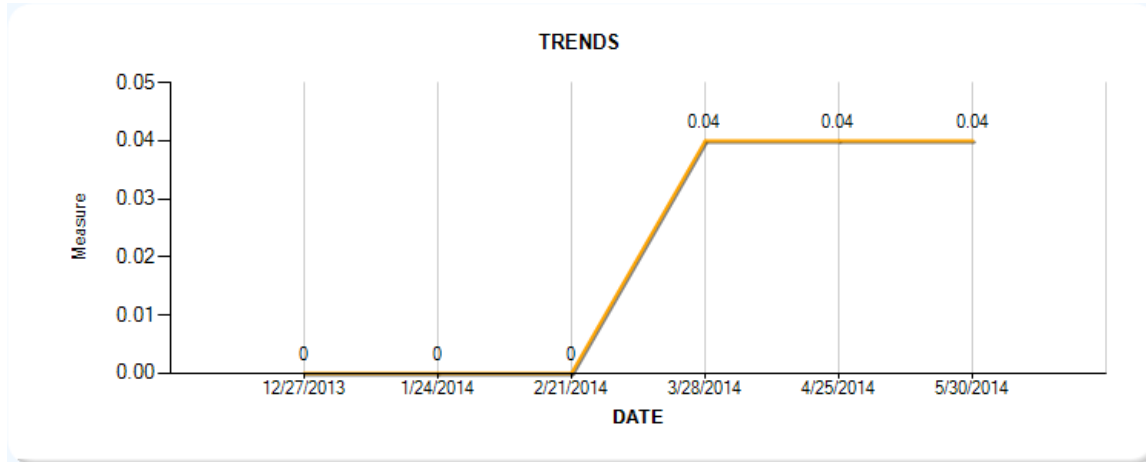
### Safety Event Group Measure vs Percentile



Measure =  $\frac{\text{Sum of Time Severity Weight (AxB)}}{21} = \frac{0.84}{21} = 0.04 \Rightarrow < 5 \text{ insp. w/ viol.}$

### Trends of Driver Fitness Measure based on SMS 3.0

The trends area shows a Motor Carrier's safety performance over time using a consistent methodology, SMS 3.0



Trends Detail	12/27/2013	01/24/2014	02/21/2014	03/28/2014	04/25/2014	05/30/2014
Percentage:	0%	0%	0%	< 5 insp. w/ viol.	< 5 insp. w/ viol.	< 5 insp. w/ viol.
Measure:	0.00	0.00	0.00	0.04	0.04	0.04
Safety Event Grouping:	○ ○ ○ ● ○ 101-500	○ ○ ○ ● ○ 101-500	○ ○ ○ ● ○ 101-500	○ ○ ○ ● ○ 101-500	○ ○ ○ ● ○ 101-500	○ ○ ○ ● ○ 101-500
Relevant Inspections:	318	321	321	331	321	315
Total Inspections with Driver Fitness Violations:	0	0	0	1	1	1
Total Driver Fitness Violations:	0	0	0	2	2	2





### Controlled Substances and Alcohol

Operation of CMVs by drivers who are impaired due to alcohol, illegal drugs, and misuse of prescription or over-the-counter medications. (FMCSR Part [392](#))

#### BASIC Overall Status

Does not exceed intervention threshold based upon On-road Performance and Investigation Results.  
(Based on a 24-month record ending May 30, 2014)



 MEASURE: 0.00  
 PERCENTILE: 0%  
(Threshold: 80%)

Safety Event  
Grouping  
  
Not Applicable

Relevant Inspections: 315  
Total Inspections with Drugs/Alcohol Violations: 0  
Total Drugs/Alcohol Violations: 0

The Controlled Substances and Alcohol measure/percentile is based on Roadside Inspection reports. Some Controlled Substances and Alcohol violations are reported when a Roadside Inspection was performed following a traffic stop for the Controlled Substances and Alcohol violation. These reported violations do not always result in the issuance of a citation to the driver.

## DRUGS/ALCOHOL

There are no Violations to display


## INSPECTIONS WITH VIOLATIONS HISTORY

There are no Inspections with violations to display

### Investigation Results Overview



No serious violation(s) discovered

Certain violations found during an investigation can result in a  for a BASIC. The status remains for 12 months following the investigation.



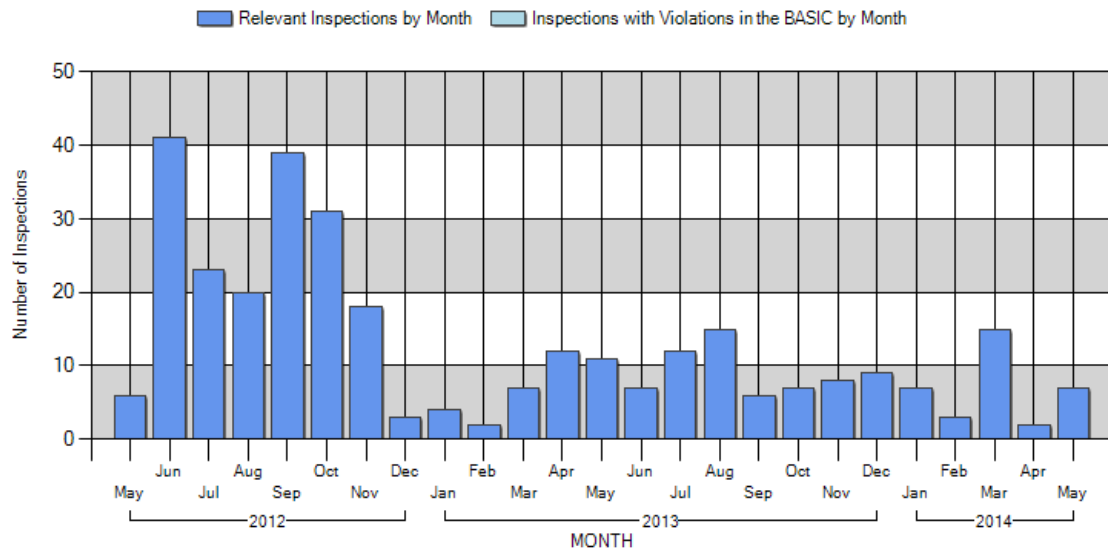
## SERIOUS VIOLATIONS FROM INVESTIGATIONS

There are no Serious Violations to display

Use this page to view graphs of various aspects of your safety performance.

Trends View

## Relevant Inspections vs Inspections with Violations



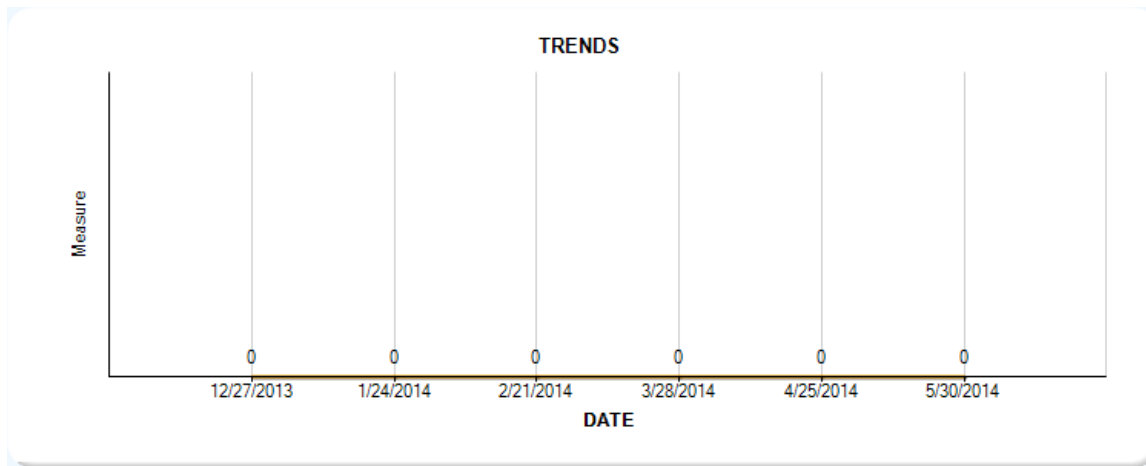
## Safety Event Group Measure vs Percentile

The motor carrier's percentile is 0%. No graph available.

$$\text{Measure} = \frac{\text{Sum of Time Severity Weight (AxB)}}{\text{Sum of Time Weight (B)}} = \frac{0}{458} = 0 \Rightarrow 0\%$$

## Trends of Controlled Substances and Alcohol Measure based on SMS 3.0

The trends area shows a Motor Carrier's safety performance over time using a consistent methodology, SMS 3.0



Trends Detail	12/27/2013	01/24/2014	02/21/2014	03/28/2014	04/25/2014	05/30/2014
Percentage:	0%	0%	0%	0%	0%	0%
Measure:	0.00	0.00	0.00	0.00	0.00	0.00
Safety Event Grouping:	Not Applicable	Not Applicable	Not Applicable	Not Applicable	Not Applicable	Not Applicable
Relevant Inspections:	318	321	321	331	321	315
Total Inspections with Drugs/Alcohol Violations:	0	0	0	0	0	0
Total Drugs/Alcohol Violations:	0	0	0	0	0	0



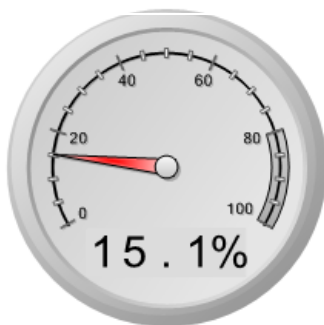
## Vehicle Maintenance

Failure to properly maintain a CMV and/or to properly prevent shifting loads. (FMCSR Parts [392](#), [393](#) and [396](#))

### BASIC Overall Status

Does not exceed intervention threshold based upon On-road Performance and Investigation Results.  
*(Based on a 24-month record ending May 30, 2014)*

### On-road Performance Overview



MEASURE: 1.54  
 PERCENTILE: 15.1%  
 (Threshold: 80%)



Relevant Inspections: 277  
 Total Inspections with Vehicle Maint. Violations: 73  
 Total Vehicle Maint. Violations: 103

### VEHICLE MAINT.

Violation	Description	# Total Violations	# OOS Violations	Violation Weight
392.8	Failing to inspect/use emergency equipment	1	0	2

392.9(a)	Failing to secure load	1	1	1
392.9(a)(2)	Failing to secure vehicle equipment	1	1	1
393.100	Failure to prevent cargo shifting	1	1	1
393.100(b)	Leaking/spilling/blowing/falling cargo	1	1	7
393.104(a)	Inadequate/damaged securement device/system	1	1	1
393.11	No/defective lighting devices/reflective devices/projected	1	0	3
393.110(b)	Insufficient tiedowns; without headerboard/blocking	1	1	3
393.11RT	Retroreflective sheeting not affixed as required - Trailer manufactured on or after 12/1/1993	1	0	3
393.11TL	No retro reflective sheeting or reflex reflectors on mud flaps - Truck Tractor manufactured on or after 7/1/1997	3	0	3
393.11TT	No retroreflective sheeting/reflex reflectors - Truck Tractor manufactured on or after 7/1/1997	1	0	3
393.13(c)(2)	No lower rear retroreflective sheeting or reflex reflective material as required for vehicles manufactured before 12/1/1993	1	0	3
393.201(a)	Frame cracked / loose / sagging / broken	4	0	2
393.201(d)	Frame accessories improperly attached	1	0	2
393.207(f)	Air suspension pressure loss	2	1	7
393.209(e)	Power steering violations	1	0	6
393.25(f)	Stop lamp violations	1	0	6
393.30	Improper battery installation	1	0	3
393.45	Brake tubing and hose adequacy	1	1	4
393.45(b)(2)	Failing to secure brake hose/tubing against mechanical damage	3	1	4
393.45(d)	Brake connections with leaks/constrictions	3	0	4
393.45DLPC	Brake Connections with Leaks - Connection to Power Unit	1	0	4
393.45DLUV	Brake Connections with Leaks Under Vehicle	2	0	4
393.47(a)	Inadequate brakes for safe stopping	1	0	4
393.47(d)	Insufficient brake linings	1	0	4
393.47(e)	Clamp/Roto-Chamber type brake(s) out of adjustment	7	0	4
393.53(b)	Automatic brake adjuster CMV manufactured on or after 10/20/1994 - air brake	6	0	4
393.55(d)(1)	ABS - malfunctioning circuit/signal - truck tractor manufactured on or after 3/1/1997, single-unit CMV manufactured on or after 3/1/1998	3	0	4
393.55(d)(2)	ABS - malfunctioning indicator to cab of towing CMV manufactured on or after 3/1/2001	1	0	4
393.55(d)(3)	No or Defective ABS Malfunction Indicator for towed vehicles on vehicles manufactured after February 2001	1	0	4
393.55(e)	ABS - malfunctioning lamps towed CMV manufactured on or after 3/1/1998	4	0	4
393.60(d)	Glazing permits less than 70 percent of light	1	0	1
393.75(a)	Flat tire or fabric exposed	1	1	8
393.75(a)(1)	Tire — ply or belt material exposed	1	0	8
393.75(a)(2)	Tire — tread and/or sidewall separation	1	0	8
393.75(a)(3)	Tire — flat and/or audible air leak	2	2	8
393.75(c)	Tire — other tread depth less than 2/32 of inch	1	0	8
393.75(h)	Tire underinflated	1	0	3
393.78	Windshield wipers inoperative/defective	1	0	1
393.9	Inoperative required lamps	9	2	2
393.95(a)	No/discharged/unsecured fire extinguisher	1	0	2
393.9H	Inoperative head lamps	2	0	6
393.9T	Inoperative tail lamp	1	0	6
393.9TS	Inoperative turn signal	1	1	6
396.17(c)	Operating a CMV without proof of a periodic inspection	2	0	4
396.3(a)(1)	Inspection/repair and maintenance parts and accessories	15	1	2
396.3A1B	Brakes (general)	4	0	4
396.3A1T	Tires (general)	1	0	8

### INSPECTIONS WITH VIOLATIONS HISTORY

Report			Vehicle			Measure			
Inspection Date	#	ST	Plate #	Lic ST	Type	Severity Weight (A)	Time Weight (B)	Time Severity Weight (AxB)	
1	5/21/2014	KYCV42250065	KY	10700PC	NY	Truck Tractor	6	3	18
Violation: 393.45 Brake tubing and hose adequacy (OOS)						6	=4 (viol weight) + 2 (OOS)		
2	5/20/2014	TX143W9DCO05	TX	10700PC	NY	Truck Tractor	13	3	39
Violation: 393.110(b) Insufficient tiedowns; without headerboard/blocking (OOS)						5	=3 (viol weight) + 2 (OOS)		
Violation: 393.75(c) Tire — other tread depth less than 2/32 of inch (Non-OOS)						8			
3	3/4/2014	PAS027005008	PA	21933PC	NY	Truck Tractor	2	3	6
Violation: 393.201(d) Frame accessories improperly attached (Non-OOS)						2			
4	12/23/2013	PAS299002348	PA	15607PC	NY	Truck Tractor	6	3	18
Violation: 393.45DLPC Brake Connections with Leaks - Connection to Power Unit (Non-OOS)						4			
Violation: 396.3(a)(1) Inspection/repair and maintenance parts and accessories (Non-OOS)						2			
5	12/23/2013	PAS554001047	PA	21933PC	NY	Truck Tractor	12	3	36






35	11/7/2012	NYSPO0033666	NY	15607PC	NY	Truck Tractor	3	1	3
Violation: 393.11TL No retro reflective sheeting or reflex reflectors on mud flaps - Truck Tractor manufactured on or after 7/1/1997 (Non-OOS)							3		
36	11/5/2012	NYSPG0013472	NY	10420PC	NY	Truck Tractor	8	1	8
Violation: 393.55(d)(1) ABS - malfunctioning circuit/signal - truck tractor manufactured on or after 3/1/1998, single-unit CMV manufactured on or after 3/1/1998 (Non-OOS)							4		
Violation: 393.55(e) ABS - malfunctioning lamps towed CMV manufactured on or after 3/1/1998 (Non-OOS)							4		
37	11/5/2012	NYSPG0070412	NY	10421PC	NY	Truck Tractor	4	1	4
Violation: 393.55(d)(3) No or Defective ABS Malfunction Indicator for towed vehicles on vehicles manufactured after February 2001 (Non-OOS)							4		
38	10/25/2012	NYSPO0033641	NY	10423PC	NY	Truck Tractor	10	1	10
Violation: 393.11TL No retro reflective sheeting or reflex reflectors on mud flaps - Truck Tractor manufactured on or after 7/1/1997 (Non-OOS)							3		
Violation: 393.11TT No retroreflective sheeting/reflex reflectors - Truck Tractor manufactured on or after 7/1/1997 (Non-OOS)							3		
Violation: 393.55(d)(1) ABS - malfunctioning circuit/signal - truck tractor manufactured on or after 3/1/1997, single-unit CMV manufactured on or after 3/1/1998 (Non-OOS)							4		
39	10/16/2012	MD00FW019569	MD	10722PC	NY	Truck Tractor	16	1	16
Violation: 393.201(a) Frame cracked / loose / sagging / broken (Non-OOS)							2		
Violation: 393.47(e) Clamp/Roto-Chamber type brake(s) out of adjustment (Non-OOS)							4		
Violation: 396.3A1B Brakes (general) (Non-OOS)							4		
Violation: 393.95(a) No/discharged/unsecured fire extinguisher (Non-OOS)							2		
Violation: 393.53(b) Automatic brake adjuster CMV manufactured on or after 10/20/1994 - air brake (Non-OOS)							4		
40	10/9/2012	PAS048002029	PA	15607PC	NY	Truck Tractor	8	1	8
Violation: 393.75(a)(2) Tire — tread and/or sidewall separation (Non-OOS)							8		
41	10/9/2012	PAS165001276	PA	10738PC	NY	Truck Tractor	2	1	2
Violation: 396.3(a)(1) Inspection/repair and maintenance parts and accessories (Non-OOS)							2		
42	10/3/2012	PAS375001299	PA	10737PC	NY	Truck Tractor	2	1	2
Violation: 396.3(a)(1) Inspection/repair and maintenance parts and accessories (Non-OOS)							2		
43	9/27/2012	NYSPA0072405	NY	10710PC	NY	Truck Tractor	4	1	4
Violation: 393.55(e) ABS - malfunctioning lamps towed CMV manufactured on or after 3/1/1998 (Non-OOS)							4		
44	9/26/2012	PAS375001292	PA	15607PC	NY	Truck Tractor	2	1	2
Violation: 396.3(a)(1) Inspection/repair and maintenance parts and accessories (Non-OOS)							2		
45	9/25/2012	PAS455000357	PA	10420PC	NY	Truck Tractor	8	1	8
Violation: 393.47(e) Clamp/Roto-Chamber type brake(s) out of adjustment (Non-OOS)							4		
Violation: 393.53(b) Automatic brake adjuster CMV manufactured on or after 10/20/1994 - air brake (Non-OOS)							4		
46	9/20/2012	PAS375001288	PA	15607PC	NY	Truck Tractor	2	1	2
Violation: 396.3(a)(1) Inspection/repair and maintenance parts and accessories (Non-OOS)							2		
47	9/19/2012	PAS555000448	PA	10421PC	NY	Truck Tractor	6	1	6
Violation: 393.9 Inoperative required lamps (Non-OOS)							2		
Violation: 396.3(a)(1) Inspection/repair and maintenance parts and accessories (OOS)							4	=2 (viol weight) + 2 (OOS)	
48	9/18/2012	PAS165001261	PA	10738PC	NY	Truck Tractor	4	1	4
Violation: 393.45(d) Brake connections with leaks/constrictions (Non-OOS)							4		
49	9/17/2012	PAS002001054	PA	10709PC	NY	Truck Tractor	6	1	6
Violation: 393.25(f) Stop lamp violations (Non-OOS)							6		
50	9/17/2012	PAS002001056	PA	10705PC	NY	Truck Tractor	6	1	6
Violation: 396.3(a)(1) Inspection/repair and maintenance parts and accessories (Non-OOS)							2		
Violation: 396.3A1B Brakes (general) (Non-OOS)							4		
51	9/17/2012	PAS048002009	PA	10721PC	NY	Truck Tractor	2	1	2
Violation: 396.3(a)(1) Inspection/repair and maintenance parts and accessories (Non-OOS)							2		
52	9/17/2012	PAS048002010	PA	10716PC	NY	Truck Tractor	4	1	4
Violation: 396.3A1B Brakes (general) (Non-OOS)							4		
53	9/11/2012	PAS339000973	PA	30536JR	NY	Straight Truck	2	1	2
Violation: 392.8 Failing to inspect/use emergency equipment (Non-OOS)							2		
54	9/5/2012	PAS048001995	PA	10737PC	NY	Truck Tractor	4	1	4
Violation: 393.47(d) Insufficient brake linings (Non-OOS)							4		
55	8/14/2012	WI2312003307	WI	10710PC	NY	Truck Tractor	3	1	3
Violation: 392.9(a) Failing to secure load (OOS)							3	=1 (viol weight) + 2 (OOS)	
56	8/2/2012	PAS165001239	PA	10738PC	NY	Truck Tractor	8	1	8
Violation: 393.9TS Inoperative turn signal (OOS)							8	=6 (viol weight) + 2 (OOS)	
57	7/18/2012	NYSPB0123115	NY	10713PC	NY	Truck Tractor	8	1	8
Violation: 393.45(b)(2) Failing to secure brake hose/tubing against mechanical damage (OOS)							6	=4 (viol weight) + 2 (OOS)	
Violation: 393.9 Inoperative required lamps (Non-OOS)							2		
58	7/18/2012	WV2752000587	WV	10738PC	NY	Truck Tractor	10	1	10
Violation: 393.75(a) Flat tire or fabric exposed (OOS)							10	=8 (viol weight) + 2 (OOS)	
59	7/12/2012	PAS048001977	PA	10738PC	NY	Truck Tractor	2	1	2
Violation: 396.3(a)(1) Inspection/repair and maintenance parts and accessories (Non-OOS)							2		
60	7/10/2012	NYSPB0203240	NY	10420PC	NY	Truck Tractor	4	1	4
Violation: 393.45(d) Brake connections with leaks/constrictions (Non-OOS)							4		
61	7/10/2012	PAS002001033	PA	15607PC	NY	Truck Tractor	2	1	2
Violation: 393.201(a) Frame cracked / loose / sagging / broken (Non-OOS)							2		
62	6/28/2012	PAS165001231	PA	10738PC	NY	Truck Tractor	4	1	4
Violation: 393.45(b)(2) Failing to secure brake hose/tubing against mechanical damage (Non-OOS)							4		
63	6/28/2012	PAS375001242	PA	15607PC	NY	Truck Tractor	4	1	4
Violation: 393.45(d) Brake connections with leaks/constrictions (Non-OOS)							4		
64	6/27/2012	PAS048001971	PA	10737PC	NY	Truck Tractor	2	1	2
Violation: 396.3(a)(1) Inspection/repair and maintenance parts and accessories (Non-OOS)							2		
65	6/26/2012	NYSPB0203224	NY	10420PC	NY	Truck Tractor	2	1	2

Violation: 396.3(a)(1) Inspection/repair and maintenance parts and accessories (Non-OOS)							2		
66	6/20/2012	PAS165001229	PA	15607PC	NY	Truck Tractor	2	1	2
Violation: 396.3(a)(1) Inspection/repair and maintenance parts and accessories (Non-OOS)							2		
67	6/19/2012	PAS002001029	PA	10737PC	NY	Truck Tractor	7	1	7
Violation: 393.207(f) Air suspension pressure loss (Non-OOS)							7		
68	6/13/2012	PAS165001227	PA	10737PC	NY	Truck Tractor	2	1	2
Violation: 393.201(a) Frame cracked / loose / sagging / broken (Non-OOS)							2		
69	6/7/2012	NYSPB0213108	NY	10419PC	NY	Truck Tractor	4	1	4
Violation: 393.47(e) Clamp/Roto-Chamber type brake(s) out of adjustment (Non-OOS)							4		
70	6/6/2012	UT12DM000014	UT	10707PC	NY	Truck Tractor	8	1	8
Violation: 393.47(e) Clamp/Roto-Chamber type brake(s) out of adjustment (Non-OOS)							4		
Violation: 393.53(b) Automatic brake adjuster CMV manufactured on or after 10/20/1994 - air brake (Non-OOS)							4		
71	6/5/2012	PAS165001215	PA	10737PC	NY	Truck Tractor	6	1	6
Violation: 393.45(b)(2) Failing to secure brake hose/tubing against mechanical damage (Non-OOS)							4		
Violation: 396.3(a)(1) Inspection/repair and maintenance parts and accessories (Non-OOS)							2		
72	6/1/2012	PAS048001955	PA	10737PC	NY	Truck Tractor	2	1	2
Violation: 396.3(a)(1) Inspection/repair and maintenance parts and accessories (Non-OOS)							2		
73	5/31/2012	NYSPB0223007	NY	10420PC	NY	Truck Tractor	10	1	10
Violation: 393.11RT Retroreflective sheeting not affixed as required - Trailer manufactured on or after 12/1/1993 (Non-OOS)							3		
Violation: 393.11TL No retro reflective sheeting or reflex reflectors on mud flaps - Truck Tractor manufactured on or after 7/1/1997 (Non-OOS)							3		
Violation: 393.55(d)(2) ABS - malfunctioning indicator to cab of towing CMV manufactured on or after 3/1/2001 (Non-OOS)							4		

### Investigation Results Overview



**No serious violation(s) discovered**

Certain violations found during an investigation can result in a  for a BASIC. The status remains for 12 months following the investigation.



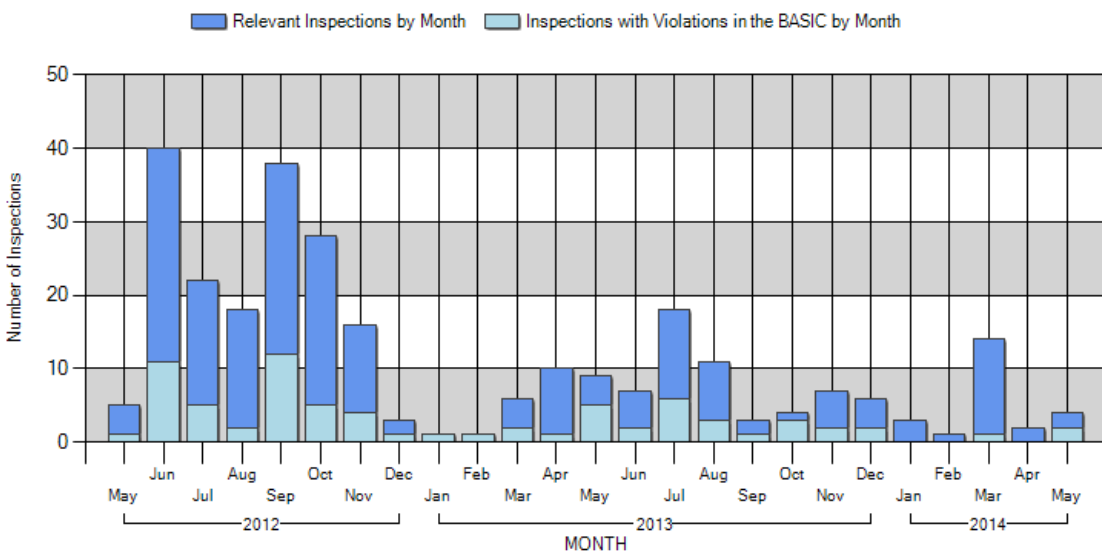
### SERIOUS VIOLATIONS FROM INVESTIGATIONS

**There are no Serious Violations to display**

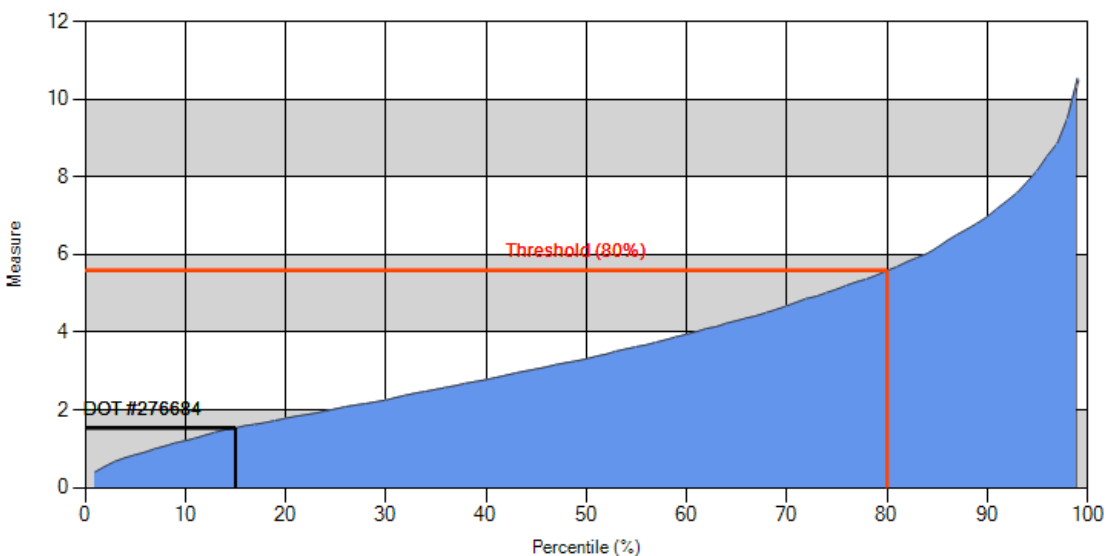
Use this page to view graphs of various aspects of your safety performance.

Trends View

## Relevant Inspections vs Inspections with Violations



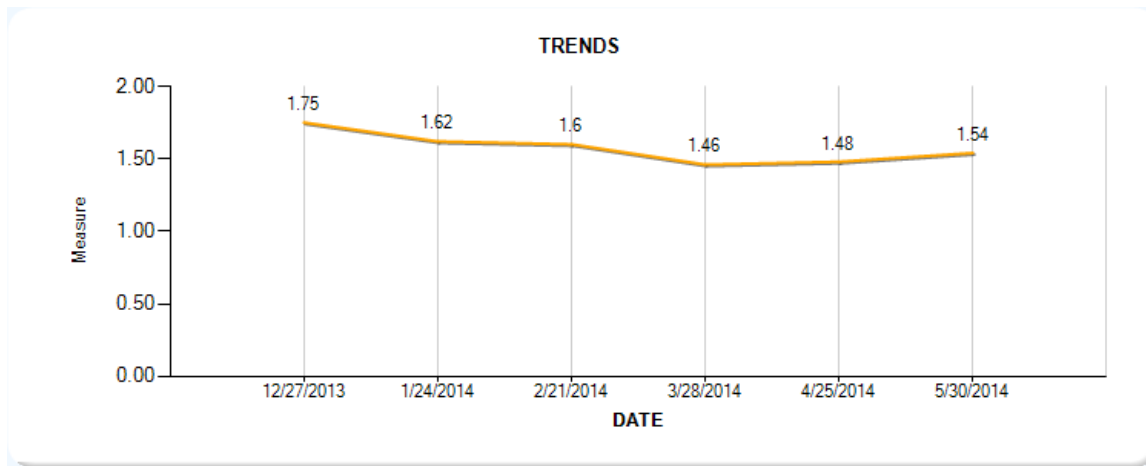
## Safety Event Group Measure vs Percentile



$$\text{Measure} = \frac{\text{Sum of Time Severity Weight (AxB)}}{\text{Sum of Time Weight (B)}} = \frac{601}{389} = 1.54 \Rightarrow 15.1\%$$

## Trends of Vehicle Maintenance Measure based on SMS 3.0

The trends area shows a Motor Carrier's safety performance over time using a consistent methodology, SMS 3.0



Trends Detail	12/27/2013	01/24/2014	02/21/2014	03/28/2014	04/25/2014	05/30/2014
Percentage:	19%	16.8%	16.4%	13.8%	14%	15.1%
Measure:	1.75	1.62	1.60	1.46	1.48	1.54
Safety Event Grouping:	○ ○ ● ○ 101-500	○ ○ ● ○ 101-500	○ ○ ● ○ 101-500	○ ○ ● ○ 101-500	○ ○ ● ○ 101-500	○ ○ ● ○ 101-500
Relevant Inspections:	276	278	276	288	282	277
Total Inspections with Vehicle Maint. Violations:	78	76	74	75	74	73
Total Vehicle Maint. Violations:	109	105	103	104	103	103



## Hazardous Materials (HM) Compliance

Unsafe handling of hazardous materials on a CMV. (FMCSR Parts 171, 172, 173, 177, 178, 180 and [397](#))

### BASIC Overall Status

Not Public - Details of this BASIC available only to logged-in users.  
(Based on a 24-month record ending May 30, 2014)

### On-road Performance Overview



MEASURE:  
PERCENTILE:  
**Not Public**  
(Threshold: 80%)

Safety Event Grouping  
Not Applicable

HM Placardable vehicle inspections: 0  
Inspections with HM Compliance Violations: 0  
Total HM Compliance Violations: 0

U.S. DOT# 276684 is not subject to the HM Placardable threshold for all BASICS. See the [HM Placardable pop-up](#) for carrier-specific details. Please note that it is possible to have a percentile in the HM Compliance BASIC and not be subject to the HM Threshold.


There are no Violations to display

## INSPECTIONS WITH VIOLATIONS HISTORY

There are no Inspections with violations to display

### Investigation Results Overview

Details of Investigation Results are only available to logged in users.

Certain violations found during an investigation can result in a  for a BASIC. The status remains for 12 months following the investigation.

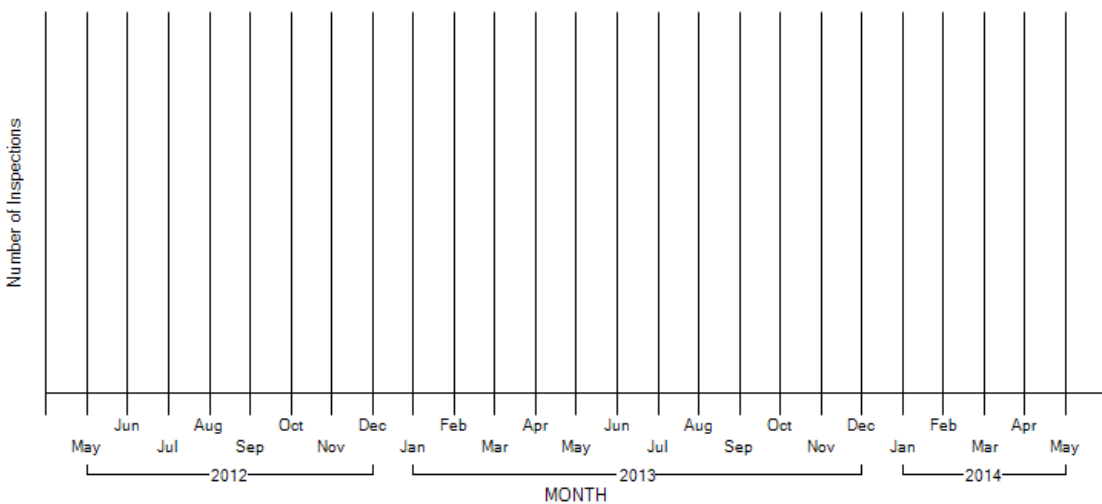


Use this page to view graphs of various aspects of your safety performance.

Trends View

### Relevant Inspections vs Inspections with Violations

■ Relevant Inspections by Month   ■ Inspections with Violations in the BASIC by Month



### Crash Indicator

Histories or patterns of high crash involvement, including frequency and severity. It is based on information from State-reported crashes.

### BASIC Overall Status

Not Public - Details of this BASIC available only to logged-in users.  
(Based on a 24-month record ending May 30, 2014)

#### On-road Performance Overview



MEASURE:  
PERCENTILE:  
**Not Public**  
(Threshold: 65%)



Average Power Units: **53.3**  
Vehicle Miles Traveled (VMT): **2,481,467**  
VMT Year: **2012** VMT Source: **Registration (MCS-150)**

Average Power Units (APU) x Utilization Factor (UF): **53.3**  
Number of Crashes: **4**  
Number with Injuries or Fatalities: **1**  
Number with HM Release: **0**


A motor carrier's crash assessment (Crash Indicator BASIC measure and percentile) and the list of crashes below represent a motor carrier's involvement in 24 months of reportable crashes, without any determination as to responsibility. [Continue for details.](#)

#### CRASH ACTIVITY DETAIL(List of vehicles involved in crashes)

Report			Vehicle			Crash				Measure		
	Date	#	State	Vh ST	Plate	Fatal	Inj.	Tow.	Spill	Sev. Wt. (A)	Time Wt. (B)	Time Sev. Wt. (AxB)
1	8/16/2013	KY0071339988	KY	NY	10711PC	0	0	Y	N	1	2	2
2	5/2/2013	NY3475873800	NY	NY	10712PC	0	0	Y	N	1	1	1
3	9/11/2012	NYSP13393340	NY	NY	10728PC	0	0	Y	N	1	1	1
4	6/1/2012	PA205731600X	PA	NY	10738PC	0	1	Y	N	2	1	2

#### Investigation Results Overview

Details of Investigation Results are only available to logged in users.

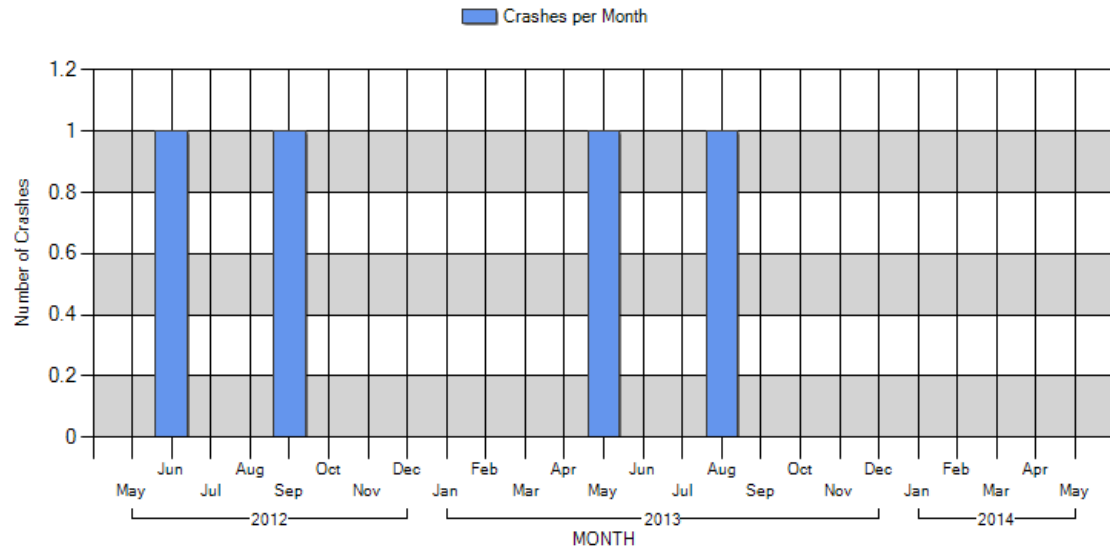
Certain violations found during an investigation can result in a  for a BASIC. The status remains for 12 months following the investigation.



Use this page to view graphs of various aspects of your safety performance.


Trends View


## Number of Crashes\* per Month



\*Crashes listed represent a motor carrier's involvement in reportable crashes, without any determination as to responsibility. Continue for details.

### \*USE OF SMS DATA/INFORMATION

The data in the Safety Measurement System (SMS) is performance data used by the Agency and Enforcement Community. A  symbol, based on that data, indicates that FMCSA may prioritize a motor carrier for further monitoring.

The  symbol is not intended to imply any federal safety rating of the carrier pursuant to 49 USC 31144. Readers should not draw conclusions about a carrier's overall safety condition simply based on the data displayed in this system. Unless a motor carrier in the SMS has received an UNSATISFACTORY safety rating pursuant to 49 CFR Part 385, or has otherwise been ordered to discontinue operations by the FMCSA, it is authorized to operate on the nation's roadways.



[Feedback](#) | [Privacy Policy](#) | [USA.gov](#) | [Freedom of Information Act \(FOIA\)](#) | [Accessibility](#) | [OIG Hotline](#) | [Web Policies and Important Links](#) | [Site Map](#) | [Plug-ins](#)

Federal Motor Carrier Safety Administration  
1200 New Jersey Avenue SE, Washington, DC 20590 • 1-800-832-5660 • TTY: 1-800-877-8339 • [Field Office Contacts](#)





